

UNLIMITED RESTORATION, INC.
COMMERCIAL/INDUSTRIAL PROPERTY RESTORATION

We're On It!

Unlimited Restoration, Inc. | URI Presents 2024 Atlantic Hurricane Season Guide

The 2024 Atlantic Hurricane Season officially begins on June 1, 2024 and ends on November 30, 2024. Early forecasts are indicating a super-charged season could spawn a near-record number of storms in the Atlantic this year, and forecasters may even run out of names for storms amid a frenzy of tropical systems.

Planning and preparation are key to ensuring the safety of yourself, loved ones, your tenants, and your property, which is why we put together this guide full of resources to help prepare you for the upcoming storm season. We've compiled resources that are applicable for property and facility management professionals, as well as for your tenants or yourself as a homeowner/renter.

We're On It!

"We're On It" is not just a tagline used in our marketing. It's at the core of who we are and what we do each and every day. It's our company culture. That's why when we say: when the unexpected occurs, you can rest assured with Unlimited Restoration - We're On It! You can trust the URI Team to deliver on our brand promise of **response, execution, safety, and transparency**.

We hope you find this Atlantic Hurricane Season Guide useful. Should you have any questions, please reach out at: 888.327.9664 or info@urinow.com.



2024 Atlantic Hurricane Season Guide

Table of Contents

Emergency Resources	4
Storm Names	4
Storm Preparation	
• 10 Steps to Ensuring Property Resilience	5
• Hurricane Preparedness Supply List	6
• Important Documents to Copy & Print	7
• Home Inventory	8
• Family Medication Form	9
• Family Contact Information	10
When a Storm Hits	
• System Shut-Down Procedures	11
• Child Safety	12
• Special Considerations for Seniors	12
• Caring for Pets	12
• Storm Warnings & Terms to Know	13
Storm Recovery	
• Returning from Evacuation	14
• Exiting Your Home After Riding Out the Storm	14
• Assessing the Damage	14
• Mosquito Safety	14
• Reopening Checklist	15
• Hurricane Disaster Recovery Services	16
About URI	17

Let's talk

Hurricane Season.

The 2024 Atlantic Hurricane Season officially begins on June 1, 2024 and ends on November 30, 2024.

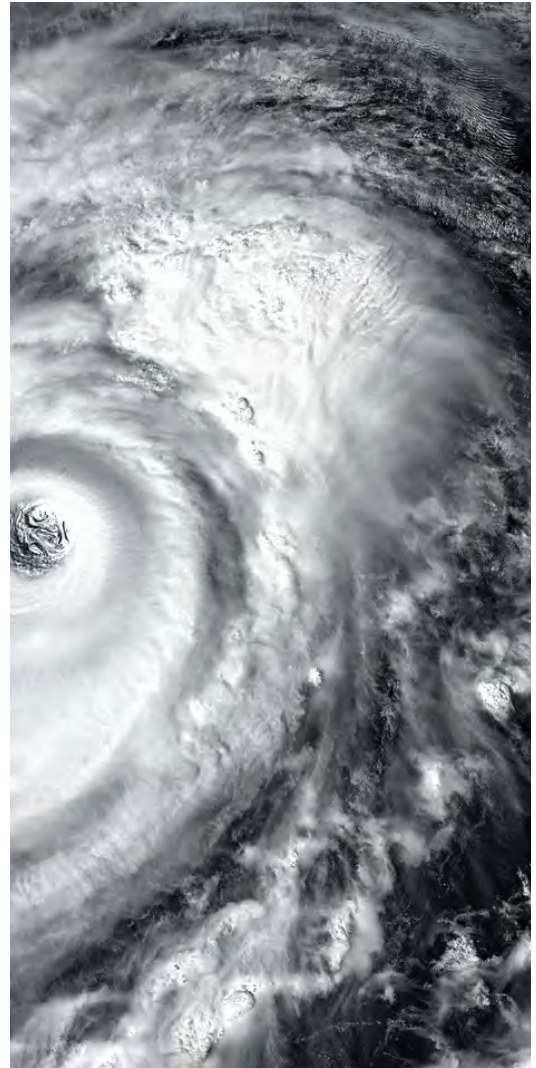
Early Forecasts

An explosive Atlantic hurricane season is being predicted for 2024, based on AccuWeather early forecast released in March 2024. AccuWeather meteorologists are forecasting 20-25 named storms across the Atlantic basin in 2024, including 8-12 hurricanes, four to seven major hurricanes and four to six direct U.S. impacts. This is all above the 30-year historical average of 14 named storms, seven hurricanes, three major hurricanes and four direct U.S. impacts.

2024 Storm Names

Is your name on the list?

Alberto	Francine	Kirk	Patty
Beryl	Gordon	Leslie	Rafael
Chris	Helene	Milton	Sara
Debby	Isaac	Nadine	Tony
Ernesto	Joyce	Oscar	Valerie
			William



Emergency Resources

Here is a list of resources available to assist you during a major storm. Keep the following contacts handy in case of an emergency.

FEMA
fema.gov
800.621.3362

**Florida Division of
Emergency Management**
floridadisaster.org
850.413.9969

Food Safety
fsis.usda.gov
850.413.9969

**CDC Emergency
Preparedness & Response**
emergency.cdc.gov
800.232.4636

Recommended Resources to Follow

The following is a list of trusted resources you can count on for quality, accurate, and timely information ahead of and during Atlantic Hurricane Season:

NOAA National Hurricane Center
fnhc.noaa.gov

Ready.Gov
ready.gov/hurricanes

**Local Government &
Authorities**

10 Steps to Ensuring Property Resilience

This Hurricane Season

1 Develop a Comprehensive Plan

Begin by crafting a detailed hurricane preparedness plan tailored to your specific properties, buildings, and even tenants. This plan should encompass evacuation procedures, communication protocols, emergency contacts, and strategies for securing vulnerable areas.

2 Conduct Regular Inspections

"Regular inspections of the property's infrastructure can help identify weak points that may exacerbate damage during a hurricane. Pay close attention to roofs, windows, doors, and drainage systems, ensuring they are structurally sound and free of debris.

3 Reinforce Structures

Strengthen the building's resilience by reinforcing vulnerable areas such as windows and doors with impact-resistant materials. Consider installing hurricane shutters or plywood panels to shield windows from flying debris, minimizing the risk of breakage.

4 Trim Trees & Shrubs

Overhanging branches and untrimmed foliage pose a significant hazard during hurricanes, potentially causing damage to buildings and power lines. Trim trees and shrubs regularly to reduce the risk of debris and ensure they won't become projectiles in high winds.

5 Secure Loose Objects

Loose objects around the property, such as signage, outdoor furniture, and equipment, can become projectiles in strong winds, causing significant damage. Secure or store these items indoors before a hurricane strikes to mitigate potential risks.

6 Backup Power Generation

Invest in backup power generation systems like generators or uninterruptible power supplies (UPS) to ensure vital systems remain operational during power outages. This includes critical infrastructure such as elevators, emergency lighting, and communication devices.

7 Establish Communication Channels

Clear and effective communication is essential before, during, and after a hurricane. Establish multiple communication channels, including email, text alerts, and social media, to disseminate important information and updates to tenants, employees, and stakeholders.

8 Coordinate with Authorities

Stay informed about hurricane forecasts and advisories issued by local authorities. Collaborate with emergency management agencies and local authorities to stay abreast of evacuation orders, road closures, and other pertinent information.

9 Educate Tenants and Employees

Educate tenants and employees about hurricane preparedness protocols, evacuation routes, and emergency procedures. Conduct regular training sessions and drills to ensure everyone knows how to respond effectively in the event of a hurricane.

10 Develop a Recovery Plan

Prepare for the aftermath of a hurricane by developing a post-disaster recovery plan. This should include procedures for assessing property damage, initiating repairs, and coordinating with insurance providers and contractors to expedite recovery efforts.

What to Stock Prior to Hurricane Season



Supply List

Quantity	Item	Storage Location	Additional Notes
	Pool Shock		
	Rain Coat		
	Rain Boots		
	Flashlights		
	Batteries		
	Blood Pathogen Kit		
	First Aid Kit		
	Duct Tape		
	Utility Knives		
	1/4" Rope		
	Sheets of Plywood		
	Screws		
	Wet Vac		
	Towels		
	Camera		
	Construction Gloves		
	Lantern		
	Green/Yellow Light Stick		
	Water		
	Tarps		
	Hard Hats		
	Safety Glasses		
	Gloves		
	Hazard Body Covers		
	Long Shoe Covers		
	Reflective Vests		



Important Documents to Copy & Print

- Family Contact Information Form (see page 9)
- Family Medication Form (see page 8)
- Health Insurance Cards
- Homeowner's Insurance Policy
- Birth Certificates
- Social Security Cards
- Driver's Licenses and Vehicle Registration
- Copies of Credit Cards (Front and Back)
- Bank Account Information and Contact Numbers
- Inventory of Valuables in your Home (see page 7)
- Recent Service or Utility Bill with your Home Address
- Local and State Highway Maps
- Local Emergency Management Office Phone Number
- Local Law Enforcement Phone Numbers
- Local Utilities Phone Numbers
- County and City Government Phone Numbers
- Local Hospital Addresses and Phone Numbers
- Local American Red Cross Shelter Phone Number
- Local Radio Station Frequencies and Phone Numbers
- Maps to your Local Shelter



HOME INVENTORY



Use the following home inventory form for each room in your home to make sure all your valuables are documented in the event of a major storm.

ITEM	PRICE	DATE	BRAND
Furniture			

Electronics			

Other			

FAMILY MEDICATION FORM



Print out and complete for each family member.

This form is for: _____

Medicinal Allergies

Medication Name	Reaction (Swelling, Difficulty Breathing, etc.)

Current Prescriptions

Use your prescription bottles to fill out this information for every medication you take.

Medication Name	Doctor's Name	Doctor's Number	Reason for Treatment	Dosage (mg)	How Often I Take It

Non-Prescription Medications Including Vitamins & Supplements

Name	Reason for Treatment	Dosage (mg)	How Often I Take It

FAMILY CONTACT INFORMATION



Out-of-Town Contact:	Contact Number:
Local Meeting Spot:	Phone Number:
Evacuation Shelter:	Phone Number:

Provide the following for each family member and update with any changes.

Name:	Social Security Number:
Date of Birth:	Special Note:
Name:	Social Security Number:
Date of Birth:	Special Note:
Name:	Social Security Number:
Date of Birth:	Special Note:
Name:	Social Security Number:
Date of Birth:	Special Note:

Create a list of where people may be found throughout the day and how to reach them.

Family Member:	
Location 1:	Location 2:
Address:	Address:
Phone Number:	Phone Number:
Family Member:	
Location 1:	Location 2:
Address:	Address:
Phone Number:	Phone Number:
Family Member:	
Location 1:	Location 2:
Address:	Address:
Phone Number:	Phone Number:
Family Member:	
Location 1:	Location 2:
Address:	Address:
Phone Number:	Phone Number:

Provide the following for each family member and update with any changes.

Important Contacts	Company Name	Phone Number	Policy Number
Medical Insurance			
Homeowner's Insurance			
Veterinarian			



During a Hurricane Warning

System Shut-Down Procedures

Pool Area

- Turn Off Pool & Spa Breakers
- Shut Off Pool & Spa Pumps
- Shut Off Gas to Pool & Spa Heaters
- Add Shock to Pool & Spa

Domestic Pump Systems

- Check for proper operation & automatic setting
- Leave 1 pump on, turn redundant systems off

A/C Cooling Towers

- Once sustained winds 45 MPH, shut off power to towers & pumps at the breaker
- Shut off all hallway & lobby units & secure A/C exhaust fan

Boiler

- Shut off gas

Emergency Generator

- Turn the generator off

Shutters

- Make sure all shutters are closed

Parking Garage

- Place gates in open position & turn power off
- Remove & store electronics from gate house
- Shut down all power to gate house
- Turn off power & secure all walk through gates & post signs
- Turn off all garage fans
- Place sand bags by doors
- Make sure drains are free from debris

Elevators

- Run all elevators to the middle landing & shut off
- Park all elevators with doors closed
- Make sure the generator elevator switch is set to emergency elevators
- Close all vents & openings in top of hoistway to prevent water from entering
- Place sandbags 4 feet high around the machine room door

Trash Chute

- Close Trap

Perimeter Areas

- Install Sandbags



Caring for Loved Ones

Child Safety

Reducing a Child's Fear During a Hurricane

- Disasters can be traumatic for children, especially if they don't know what to do. It is important that you provide guidance and reassurance to help ease their fears and emotional stress.

Constant Communication

- Keep in constant communication with your children during a hurricane. Talk with them about your plans and let them help gather the family's supplies.

Put Together a Child-Friendly Evacuation Kit

- This could include things like toys, games or stuffed animals— items that don't necessarily require power, batteries or electricity. Let your children choose these items; it gives them a sense of control, and they know what's important to them.

Special Considerations for Seniors

Water

- Dehydration is a serious health problem for older adults.
- If possible, store more than the recommended amount of water
- Store water in containers that are small and easy to handle, such as clean, sanitized two-liter plastic soda bottles
- Use caps that are easy to remove by people with arthritis

Medical Needs

- Extra hearing aid batteries
- Medical alert tag or bracelet
- List of serial numbers and styles of medical devices (e.g., pacemakers, CPAP machines)
- Copies of prescriptions with dosage, directions and refill dates
- Minimum 2-week supply of all essential medications

Electronics

- Battery-powered or manual wheelchair, walker or cane
- Wheelchair batteries

Food

- Consider special dietary needs, such as low-sodium, high-fiber or other specific foods
- Easy-to-use hand-operated can opener with a cushioned, rubber handle grip

Important Papers

- In addition to those listed on page 6, also include: Medicare cards
- Living will and medical power of attorney
- Veteran's papers

Evacuation

- Prearrange transportation with neighbors
- Identify local shelters that accommodate older adults and persons with disabilities

Caring for Pets

Before the Storm

- Make sure your pets' tags are current and print a copy of their most recent shot records.
- Take a photo of your pets for identification purposes.
- Add all of your pets' essentials to the emergency kit.
- Coordinate boarding options for your pets (pet hospital, kennel, pet-friendly hotel, local shelter, etc.).
- Designate someone to be responsible for transporting your pet in the event your family evacuates.

During the Storm

- Make sure your pets are inside to prevent them from running away.
- Feed your pets wet canned food before dry food to cut down on the water they need.
- Separate animals, especially cats and dogs.
- Storms can make animals anxious and erratic.
- Stay calm and act normally. Changes in your behavior can spook animals.
- Keep dogs, cats and other pets in crates or cages.
- If dropping off your pets at a separate shelter, take them there first. Verify the contact information of the shelter and discuss the procedure for returning to pick up your pets.

STORM TERMS TO KNOW



Tropical Storm Watch

Tropical storm conditions are possible and may affect your area within the next 48 hours.

Eye

This is the clear center of the storm that arrives with calmer conditions. But remember, an eye passing over you signals that the storm is only half over.

Tropical Storm Warning

Tropical storm conditions are expected in your area within the next 36 hours.

Rain Bands

Bands coming off the cyclone that produce severe weather conditions, such as heavy rain, wind and tornadoes.

Hurricane Watch

Hurricane conditions are possible in the area. Watches are issued up to 48 hours in advance of the anticipated storm-force winds.

Eye Wall

The area surrounding the eye contains some of the most severe weather of the storm, with the highest wind speed and heaviest precipitation.

Hurricane Warning

Hurricane conditions are expected in the area. Warnings are issued up to 36 hours in advance of the storm.

Storm Surge

A deadly rush of ocean or Gulf water that occurs when a storm makes landfall. This often floods coastal areas and sometimes areas further inland.



Storm Recovery

Returning Home from Evacuation

- Wait to return home until officials lift the evacuation order and give the all-clear.
- Do not use roads outside of the evacuation route unless told they are clear.
- Drive slowly and cautiously. Power lines and trees often fall during storms and can endanger drivers.
- Never drive into standing water; you may not know where the puddle ends and a canal starts.
- Look at the outside of your home before re- entering. You need an accurate assessment of potential damage in case the interior is dark due to a power failure.
- Leave immediately if you notice signs of danger (e.g., standing water, the smell of gas, fire damage). Contact emergency services if there is an immediate danger.

Exiting Your Home After Riding Out the Storm

- Venture outside only after officials say the storm is over and it is safe to be outside.
- Contact family and friends to let them know you're okay.
- Contact the American Red Cross if you are unable to reach friends or family. They maintain a shelter database to help you reconnect with loved ones.
- Do not use tap water for cooking or drinking until officials say it is okay.
- Only run your generator outside and away from all structures. Chain it to a large object, such as a tree, to protect it from thieves.
- If you have a carbon monoxide detector, bring it into the common room closest to your generator.

Assessing the Damage

- Look for any damage to the interior of your home. Immediately seek alternative shelter if you smell gas, have fire damage, or flood waters are not receding from your home.
- Carefully watch your home and yard. Use the buddy system where one person looks for damage while the other watches for dangers on the lawn (e.g., snakes, broken glass, downed power lines).
- Immediately report any downed lines or gas leaks to the proper authorities.
- Take pictures of the damage done to your home.

Mosquito Safety

- Rain and flooding caused by hurricanes often cause an increase in mosquitoes, which are a nuisance and can carry diseases like Zika virus, a serious concern for pregnant women.
- To control mosquito breeding, drain all open containers with standing water.
- To reduce your exposure to mosquito bites:
- Inspect and repair window and door screens, and keep windows and doors closed.
- Apply insect repellent that contains DEET or Picaridin to exposed skin and/or clothing when spending time outside.



After the Storm

Reopening Checklist

Pool Area

- Turn on pool & spa breakers
- Turn on pool & spa pumps
- Turn on gas to pool & spa heaters
- Thorough cleaning of pool & spa

Domestic Pump Systems

- Check for proper operation & automatic setting
- Turn on pump systems

A/C Cooling Towers

- Turn on power to towers & pumps at the breaker
- Turn on all hallway & lobby units & reopen A/C exhaust fan

Boiler

- Turn on gas

Emergency Generator

- Turn on the generator

Shutters

- Open all shutters

Parking Garage

- Turn gate power back on
- Replace electronics from gate house
- Resume power to gate house
- Turn on power to walk through gates & post signs
- Turn on all garage fans
- Remove sandbags
- Make sure drains are free from debris

Elevators

- Turn all elevators back on
- Make sure the generator elevator switch is set to normal operation
- Open all vents & openings in top of hoistway
- Remove sandbags from around the machine room door

Trash Chute

- Open trap

Perimeter Areas

- Remove sandbags

Hurricane Season Disaster Recovery

We're On It!



Storm Recovery Services

- Water Extraction & Structural Drying
- Remediation & Disinfection
- Temporary Roof Patching & Tarping
- Property Board-Up & Security Fencing
- Debris Removal Recovery
- Temporary Power Generators
- Fuel Replacement

Stocked Equipment & Supplies

- Generators, Desiccants & Fuel
- Air Movers & Dehumidifiers
- Large Loss Water Extractors
- Tarping & Plywood
- Hydroxyl Machines
- Thermal & ULV Foggers
- Personal Protective Equipment
- Chemicals & Disinfectants

URI Office Locations



Philadelphia, PA - Corporate Headquarters

705 General Washington Avenue, Suite 501
Norristown, PA 19403

Baltimore, MD

3521 East Federal Street
Baltimore, MD 21213

Orlando, FL

230 Sunport Lane, Suite Suite 350
Orlando, FL 32809

Tampa, FL

4410 West Crest Avenue, Suite B
Tampa, FL 33614

Washington, DC

7714 Old Alexandria Ferry Road
Clinton, MD 20735

West Palm Beach, FL

820 North 8th Street, #2
Lantana, FL 33462



Unlimited Restoration Catastrophe Response Mobile Command Centers

*The Catastrophe Response Mobile Command Centers will be strategically positioned throughout Atlantic Hurricane Season to provide timely arrival onsite to storms with regional impacts.

24/7 Support: 888.327.9664



Let's get started!

Offering 24/7 emergency service and restoration support, **Unlimited Restoration, Inc. (URI)** has minimized business interruption for commercial and industrial buildings experiencing property damage caused by fire, water, storm, or other disasters since 1996. With six strategically placed locations, URI provides dependable emergency response with timely arrival onsite to customers across the Mid-Atlantic and Florida.

URI is prepared to respond to customers across the East and Gulf Coast, experiencing catastrophic property losses that require the expertise, experience, and execution of our team. Pre-planning services are also available to support business continuity plans through the URI ERP (Emergency Response Plan).

[Learn More About Our ERP Here](#)



URI Core Competencies

- 24/7 Emergency Response
- Water Mitigation
- Fire & Smoke Damage Restoration
- Catastrophe Response
- Large Loss Expertise
- Structural Drying
- Mold Assessment & Remediation
- HVAC/Duct Cleaning
- Selective Demolition
- Reconstruction
- Emergency Response Planning

Your Point of Contact



Erin Nickerson, Director of Sales
561.938.2448 | enickerson@urinow.com



What to Expect from URI

- RESPONSE:** 24/7 dependable emergency response with timely arrival onsite
- EXECUTION:** Expert and systematic process from scope to invoice on every job
- SAFETY:** First-class protection for client and URI team health and safety
- TRANSPARENCY:** Open, honest and consistent communication